



ARTIFICIAL INTELLIGENCE

COGNITIVE VIDEO TECHNOLOGY

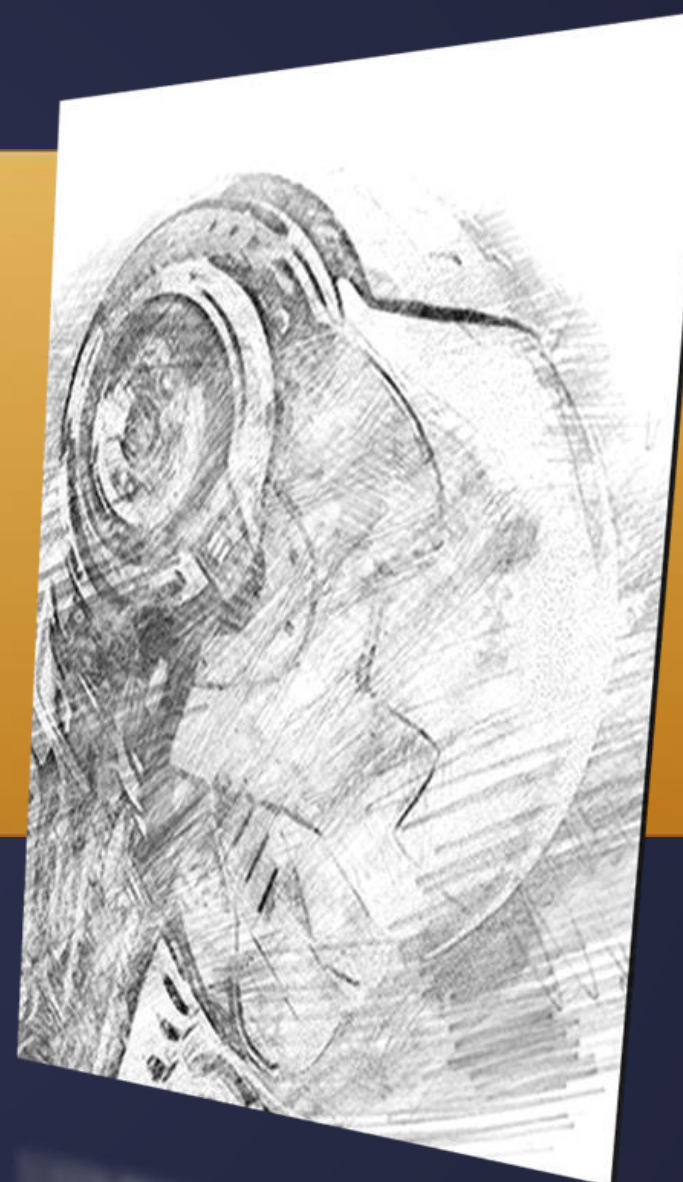


What **We Do**

THE AI COMPANY “We Build Knowledge”



ARTIFICIAL **INTELLIGENCE**



CYBER **SECURITY**



Passionate people

Our dream Team



30 PEOPLE TEAM

Offices in **Rome, Milan, Bologna, and Chieti**

AVG HeadCount growth +10%/month

Multiple Award winnings

Entitled supplier of many large enterprises

Find us on
Ariba Network 

400

YEARS EXPERIENCE

15

DEVELOPERS

8

ARTIFICIAL INTELLIGENCE



We develop WITH them

Software PARTNERS



and more...

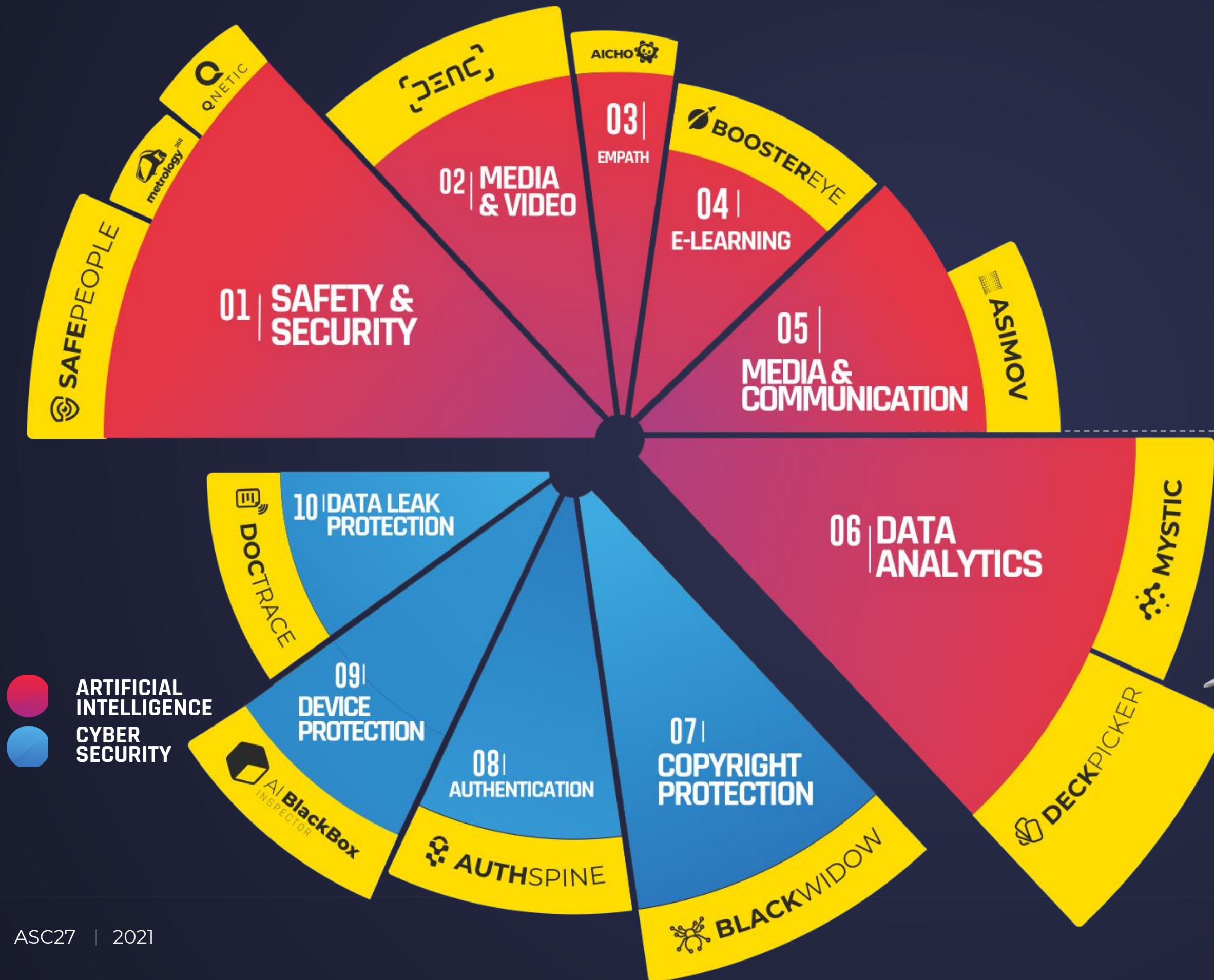


We develop ON them

Silicon PARTNERS

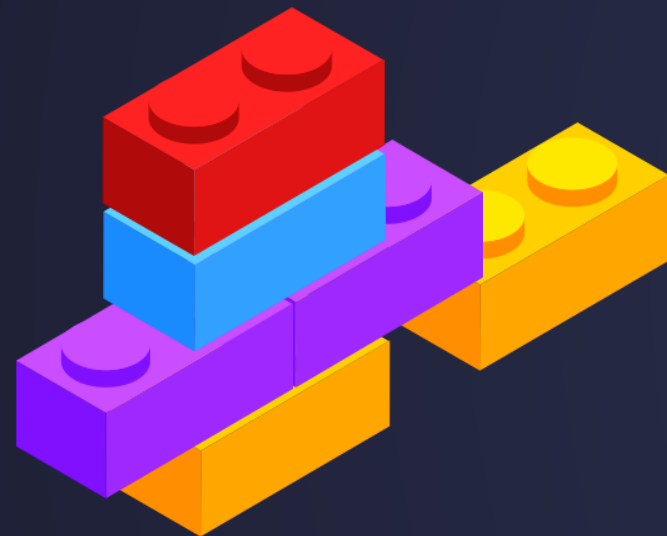


Product Portfolio



HOMEBREWED SKILLS

**We don't RENT AI,
We DO AI for our
customers.**

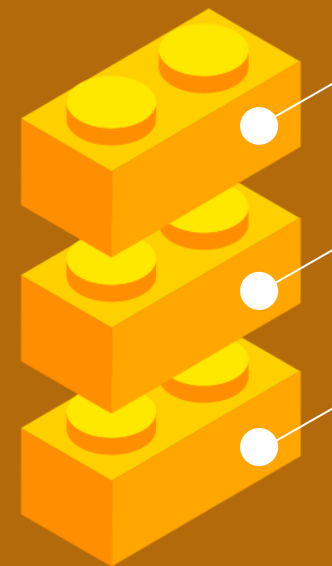


Customization and vertical developing capacity from ground up. We can arrange our Cognitive pipeline bricks to satisfy our customer's needs.

AI Engineering and software skills in a single Company. From Embedded systems to the Cloud and beyond.

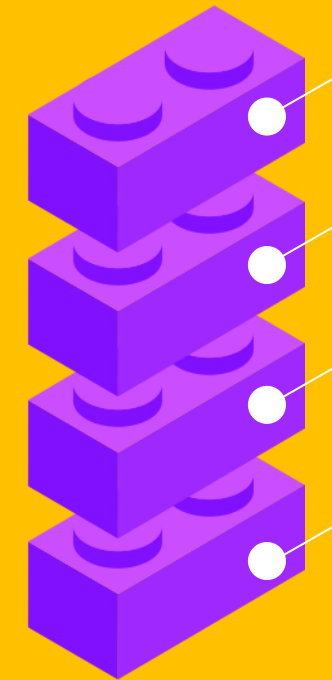
AI VISION

Safety
Surveillance
Other



AI TEXT

Advice
Data 2 Text
Text 2 Text
Cognitive



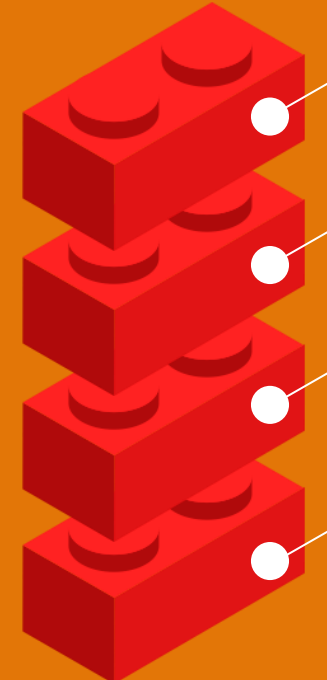
AI EMPATH

BoosterEye
AICHO



CYBER

DocTracer
AuthSpine
BlackWidow
SecureTunnel



TRL9



**REAL
SCREENSHOT**



Flight **PROVEN.**



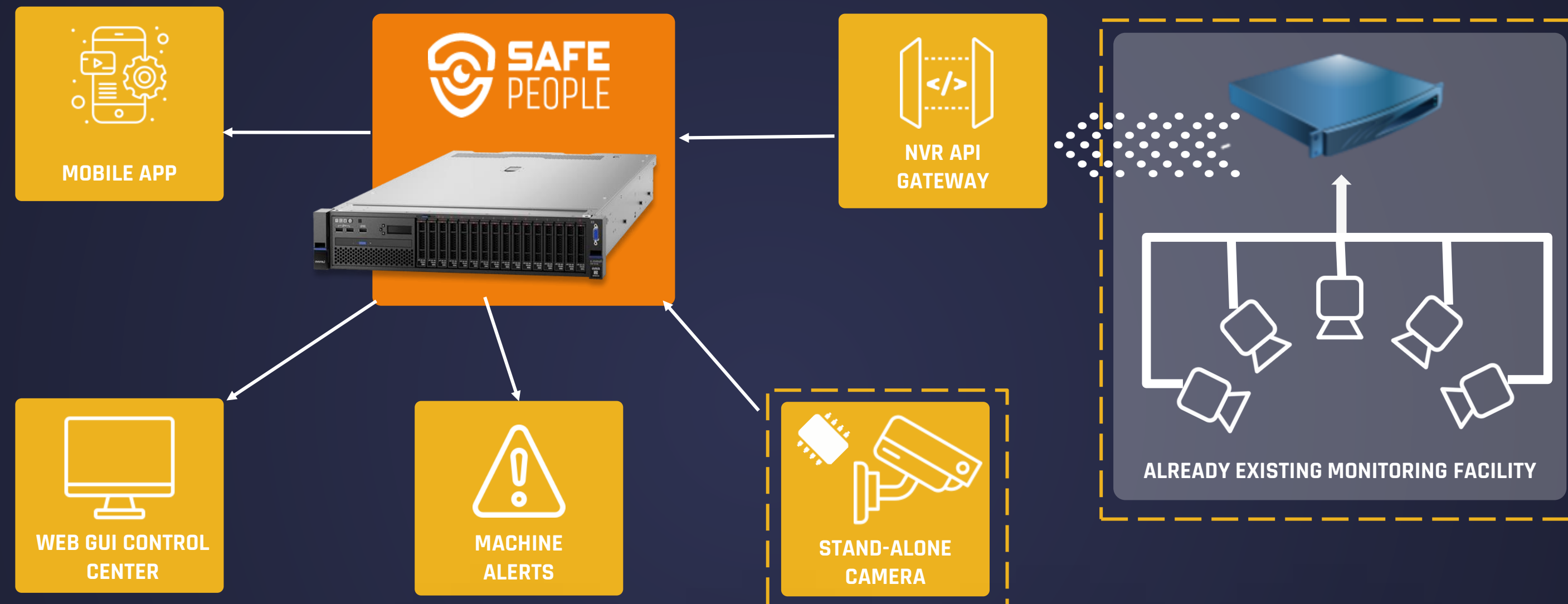
How to install SAFEPEOPLE?

a **SERVER** has to be sent to the site => attach it to the **NETWORK** => **That's It!**



SAFEPEOPLE works also on **pre-existing cameras**.

Network Video Recording Infrastructure



SAFEPEOPLE MONITORING FEATURES



Hardware Applications

Different **hardwares** enable **AI** services on different scales, even for custom solutions.

horizONE

SAFE PEOPLE

SAFE PEOPLE



Small Hardware
On the Edge



Medium Hardware
Inference Server



Large Hardware
Data Center

| | | | |
|--------------------|---|---|---|
| CAMERAS (*) | MAX 8 TLC | MAX 32 TLC | unlimited |
| USE CASES | MAX 3 | MAX 10 | unlimited |
| FEATURES | Installation on the edge | Stand-alone Server Installation | Large-scale Installation |
| | Embeddable with already existing cameras. | Stackable installation to allow more use cases | unlimited |
| | Suitable for edge scenarios | Suitable for Server Rooms | Suitable for Data Centers |
| | Integrable with existing external sensors or services | Integrable with existing external sensors or services | Integrable with existing external sensors or services |

* Supported Cameras: RTP, RTPS, ONVIF, MJPEG, mp4, other standard protocols.

Integration and Sensor Fusion

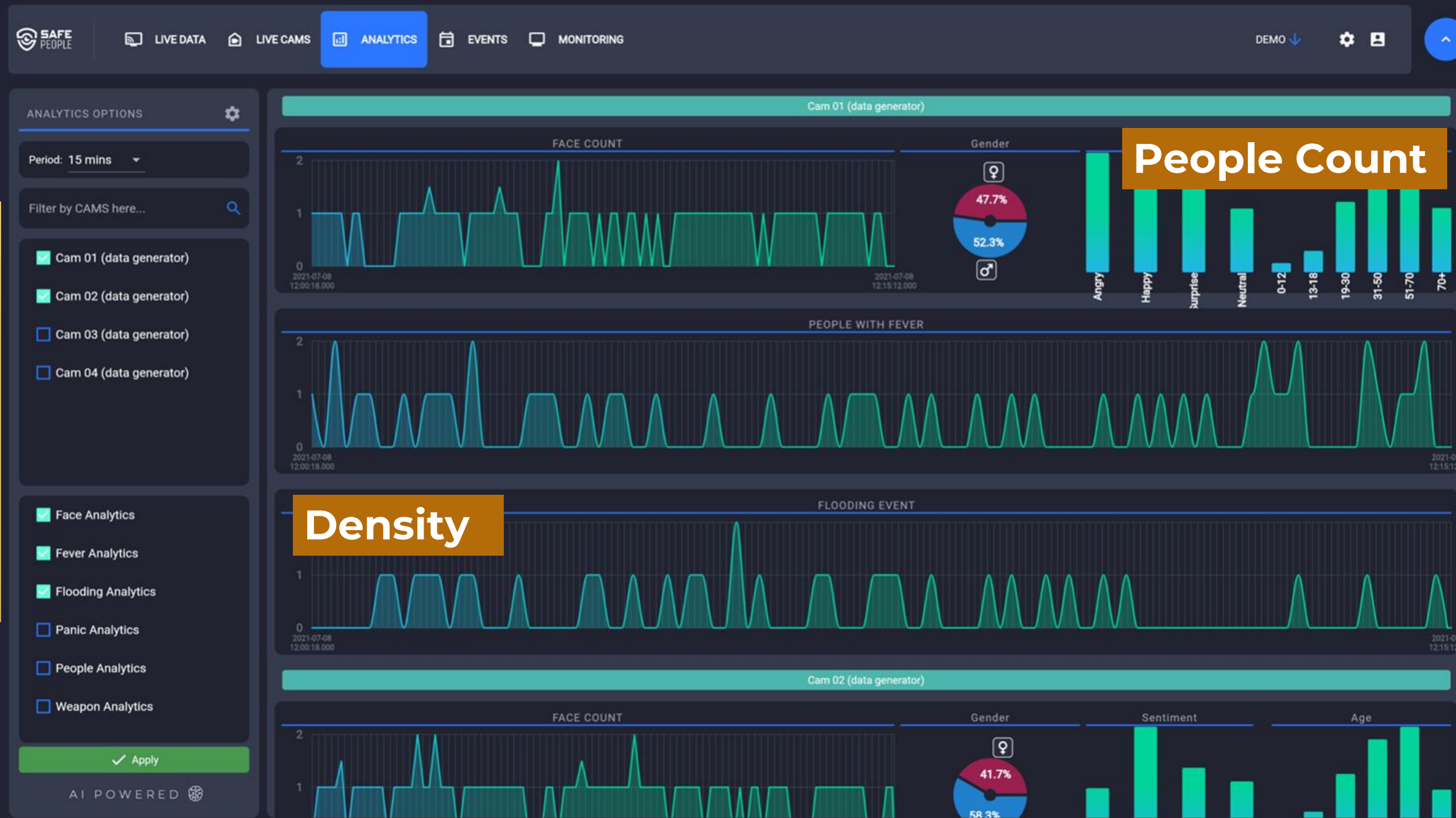
SENSORS INFORMATION ENRICHMENT

If your company already has sensors in place, SafePeople will enrich your data with **AI-Generated actionable information**.
Next time you'll analyze your data, you'll be able to have a more **precise** and **detailed** picture of your company world.





Single View, operation monitoring. Keep watching just aggregated information about what **really matters to your business**.



Have a look at the upcoming future. Using AI-Forecasting features, SafePeople can **predict** what happens next and where.

GEO MAP, AI Generated, Spatial-aware information are displayed on Maps.

PRIVACY PROOF

GDPR OK



SafePeople does not store images. It records just anonymous Counters.

Behavioural Control



People Safety.

Real-time detection and reporting of abnormal behavior or sudden changes in the attitude of crowds such as escape, panic, danger, or people fainting or collapsing on the ground.



SMART CITY



Optimize your City's traffic, gatherings, paths, and safety—no need to purchase extra specific cameras. Instead, enhance what you already have.

SMART ROAD



Traffic is vital for the best outcome ever. People can work better and faster if roads are optimized.

RETAIL



Get insights about people's routes or family status in certain areas to strengthen your retail strategies.

INDUSTRY 4.0



Save time for what matters the most: productivity and quality. Leave anything else to AI: safety, paths, measures, routes tracking.

PUBLIC



Take care of people's safety and security. Consider also social distancing issues.

WAREHOUSING



Ease your warehouse management using cameras with an eye on the safety of both your workers and vehicles.

SAFETY & SECURITY



Keep your organization safe. Allow AI to monitor dangerous events for you and to send real-time alarms for prompt reactions.

PROPERTIES



Shield your premises and automated machines from attacks and damages with AI.

... AND MORE



Leveraging on our AI components, we are able to customize our cognitive pipeline to fulfill new upcoming customer's demands.

Written Q&A 1/2

WHICH TECHNICAL SPECS SHOULD BE SUPPORTED BY THE CAMERAS TO ENABLE HSEQ FEATURES?

If a person is able to operate them, SafePeople will be able to deal with it.

CAN SAFEPEOPLE BE INTEGRATED AND WORK WITH EXTERNAL SYSTEMS?

Absolutely. At its core, SP is developed on standard systems (InfluxDB, Grafana, SNMP notifications, APIs).

HOW DO THE FORECASTING FEATURES WORK?

SP adopts many AI-Forecasting techniques and it's able to adapt the algorithm choice using a DL approach.
At its core SP adopt a FAISS approach, supervised by a Self-Learning adaptation layer for the Alg-Selection task.

IF CONNECTED TO SUITABLE CAMERAS, YOUR SOLUTION WOULD ALSO ENABLE USE CASES SUCH AS: IDENTIFICATION OF THERMAL GRADIENTS, SMOKE AND FIRE, DISPERSED GASES AND CORROSION?

Sure. SP already supports thermal and Multi-Spectral images and video streams.
We just need to train the AI models to recognize new situations that may pose a risk for the monitored sites.

CAN YOU PROVIDE ANY REFERENCES AVAILABLE IN THE INDUSTRIAL SECTOR GIVING INDICATIONS OF THE DEVELOPED USE CASES?

We have directly followed a solution for off-shore and in-shore petrol platform security in Oman.
Many more installations in industrial environment have been followed by our Partners.

Written Q&A 2/2

STARTER PACK – WHAT IS NEEDED TO START WITH A TEST?

Generally speaking: 2 weeks for the server shipment and 2 weeks for the setup

WHAT ABOUT THE BUSINESS MODEL?

Generally speaking: 1k per camera Capex Turnkey solution. 15% per yr Opex starting from the 2nd year.

PRODUCT ROADMAP

We have actually introduced in SP all the use cases that our customers have faced in people and vehicle behavioral analytics. In the upcoming quarters we will introduce new use cases and we will include the embedded support for more AI-powered camera vendors.

REFERENCE ARCHITECTURE

SP supports centralized, embedded and hybrid deployment modes.

TRAINING AND KPIS MONITORING

We support training and document packages for Users, PowerUsers and System Administrators. SP system could be optionally configured to send SNMP or Kafka messages to a centralized monitoring platform in order to monitor all the available KPIs.

THANK YOU

Q&A TIME



Download **Datasheet**