

ATMSEC[®]

Artificial Intelligence for
ATM Protection and **Monitoring**

PARTNER OF

ossif



IN THE HEART OF ROME

AI & CYBER SECURITY STARTUP

THE MAGIC BEGINS

April 2020

ASC27 was founded in 2020 as a private company.

The core team has 60 years combined of experience in AI development and carries over 200 combined years in the International CyberSecurity space.

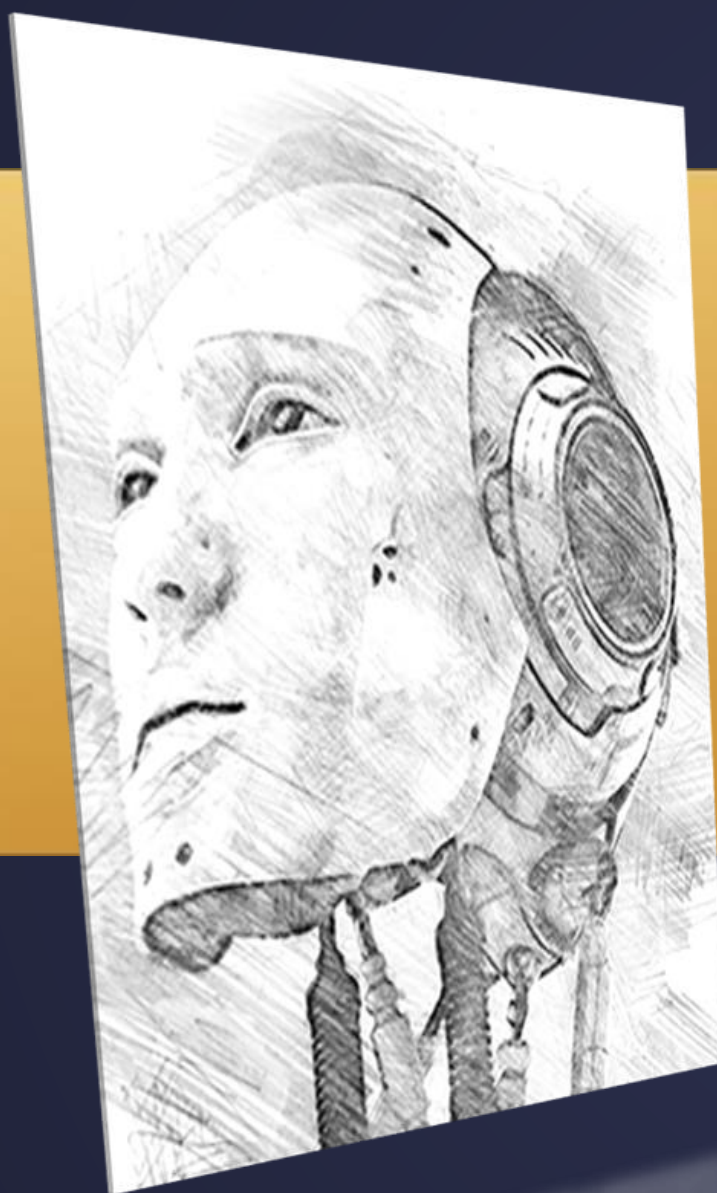
READ MORE ►



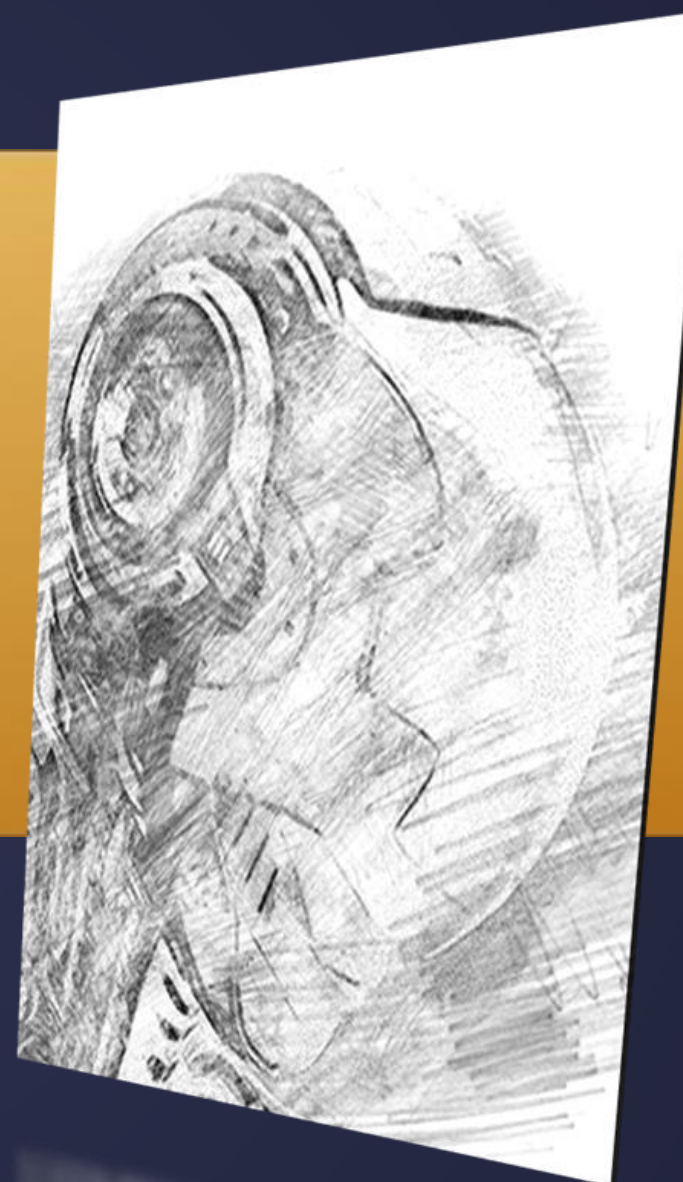
International Experienced Team.

What **We Do**


THE AI COMPANY “We Build Knowledge”



ARTIFICIAL **INTELLIGENCE**




CYBER **SECURITY**




Passion lives here

Our Team



20 PEOPLE TEAM

Offices in **Rome, Milan, and Bologna**
 AVG HeadCount growth +10%/month
 Multiple Award winners
 Entitled supplier of many large enterprises

Find us on
 Ariba Network 

300

YEARS EXPERIENCE

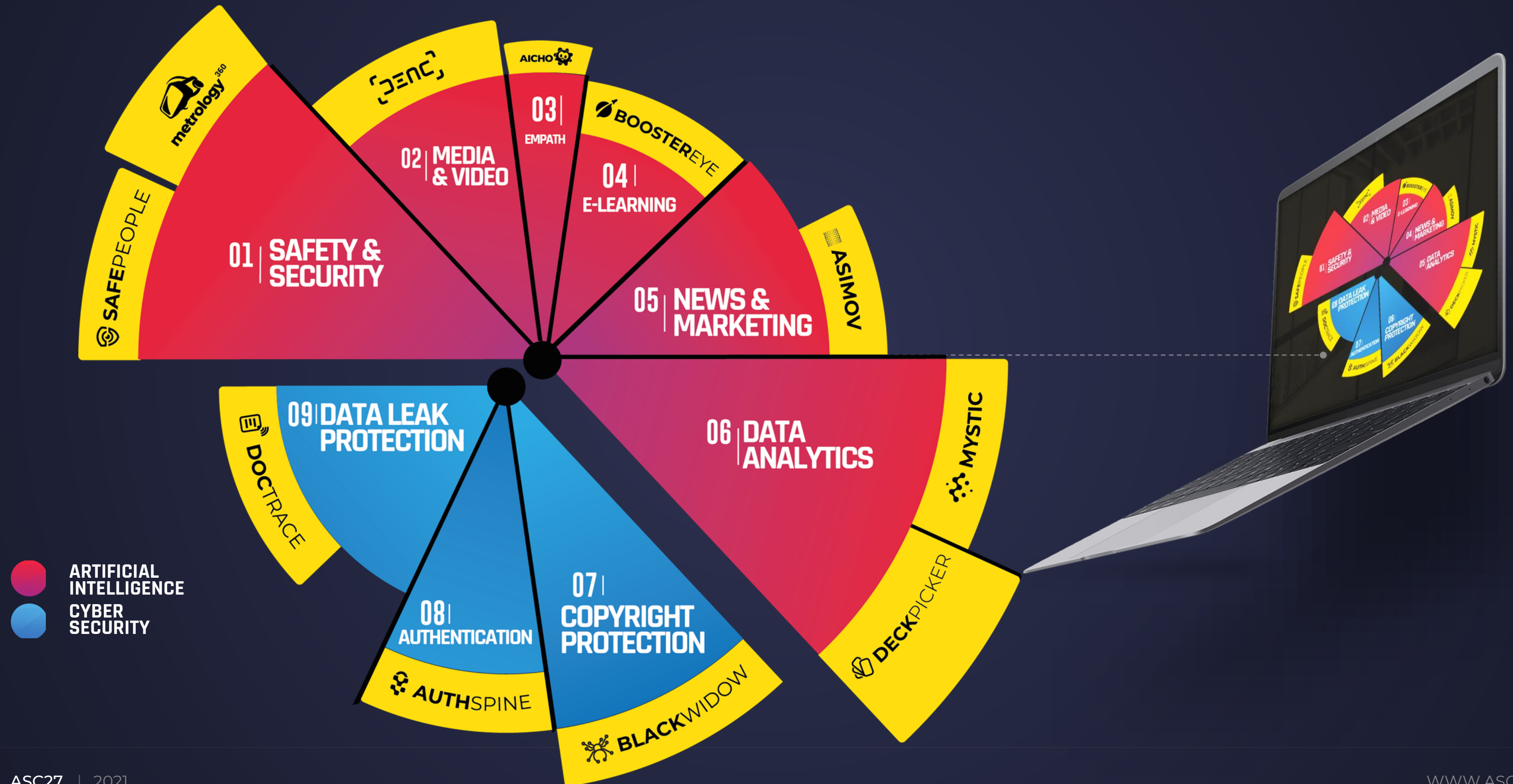
10

DEVELOPERS

6

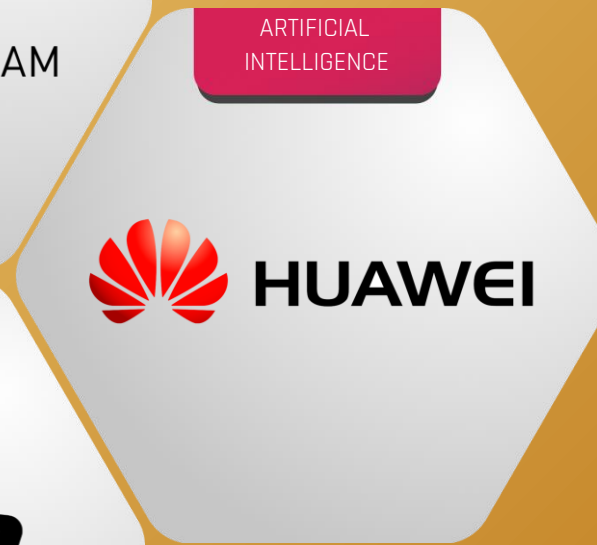
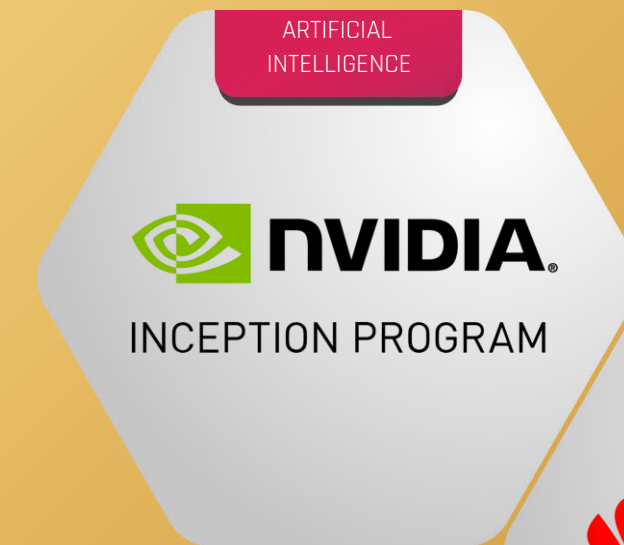
ARTIFICIAL INTELLIGENCE

Product Portfolio



We develop **WITH**

Software PARTNERS



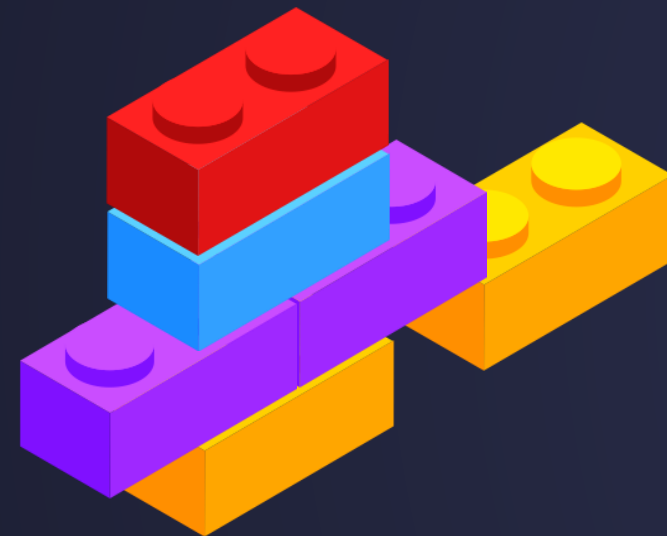
We develop **ON**

Silicon PARTNERS



HOME BREWED SKILLS

We don't RENT AI, We SEW ON AI for our customers.

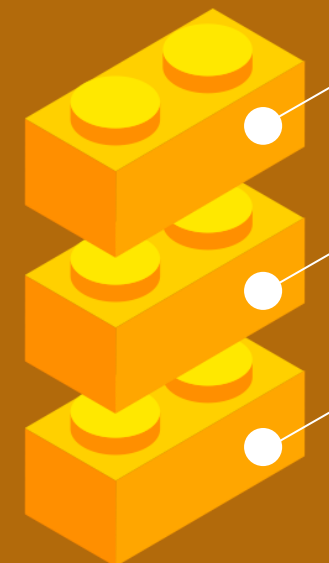


Customization and vertical developing capacity from the ground up. We are able to arrange our Cognitive pipeline bricks to satisfy our customer's needs.

AI Engineering and software skills in a single Company. From Embedded systems to the Cloud and beyond.

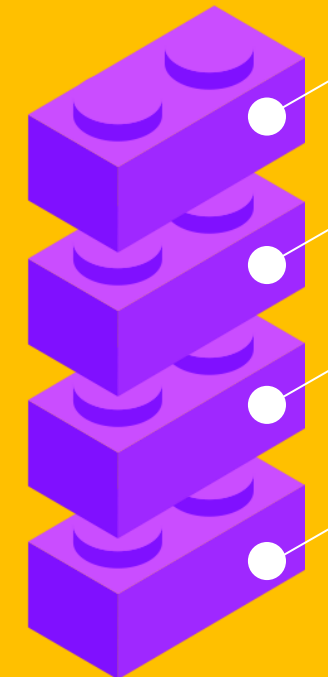
AI VISION

Safety
Surveillance
Other



AI TEXT

Advice
Data 2 Text
Text 2 Text
Cognitive



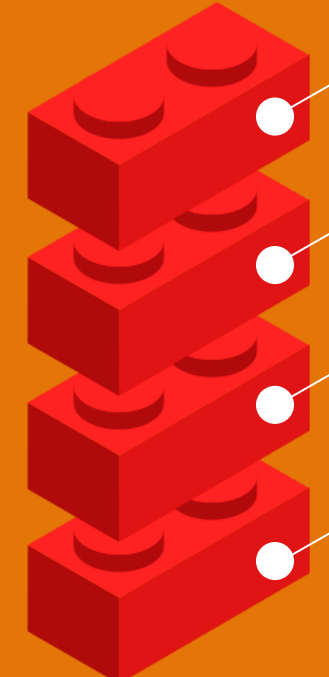
AI EMPATH

BoosterEye
AICHO

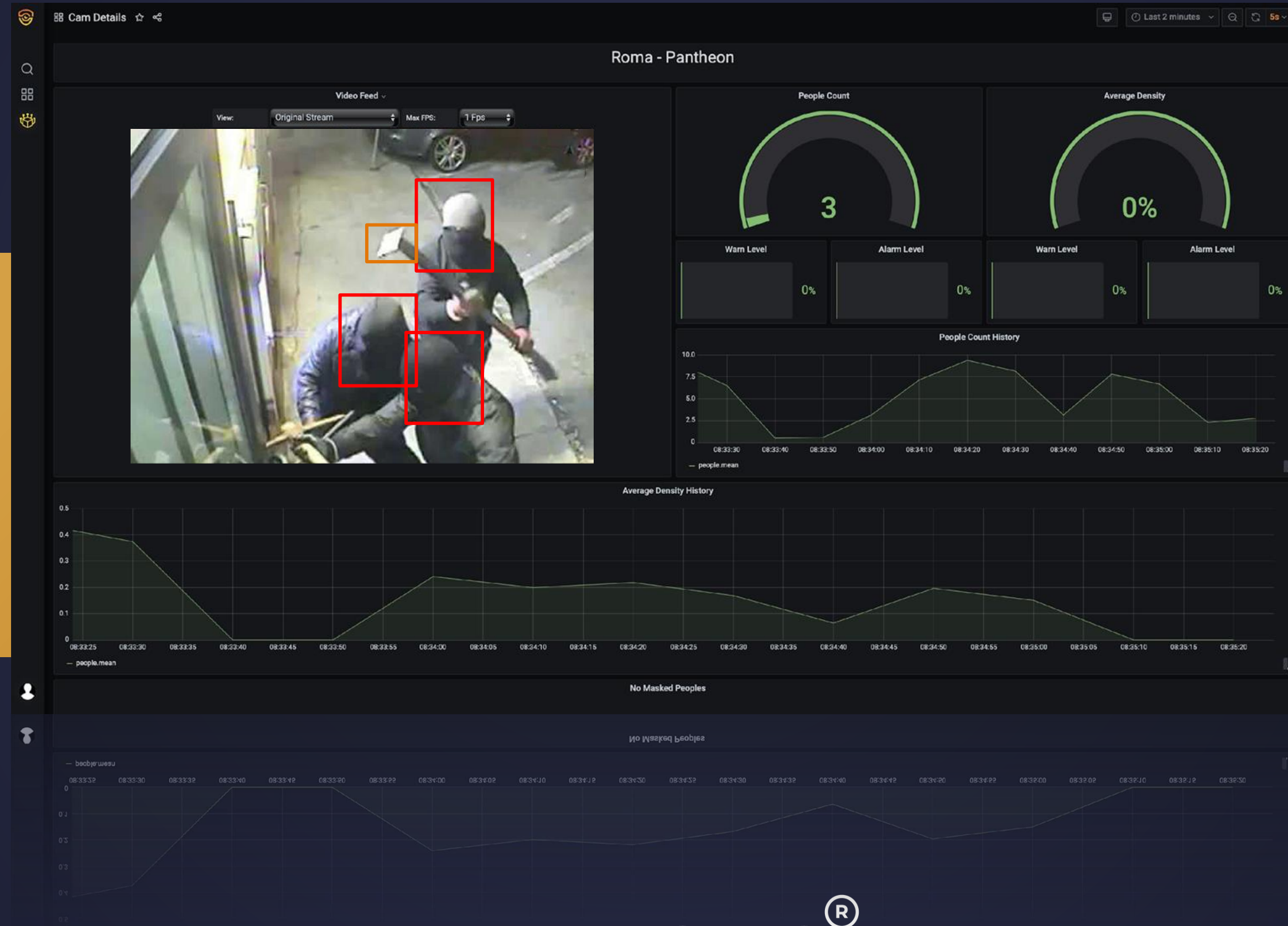


CYBER

DocTracer
AuthSpine
BlackWidow
SecureTunnel



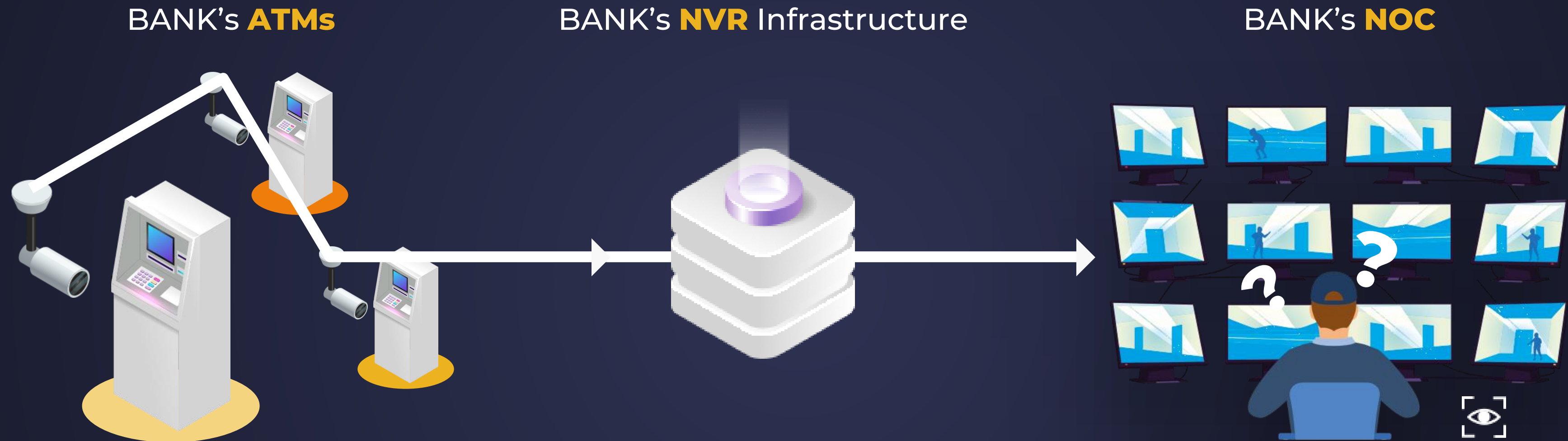
TRL9



Flight **PROVEN.**

How it works, actually ?

Nowadays few people has to monitor and manage many ATM video streams



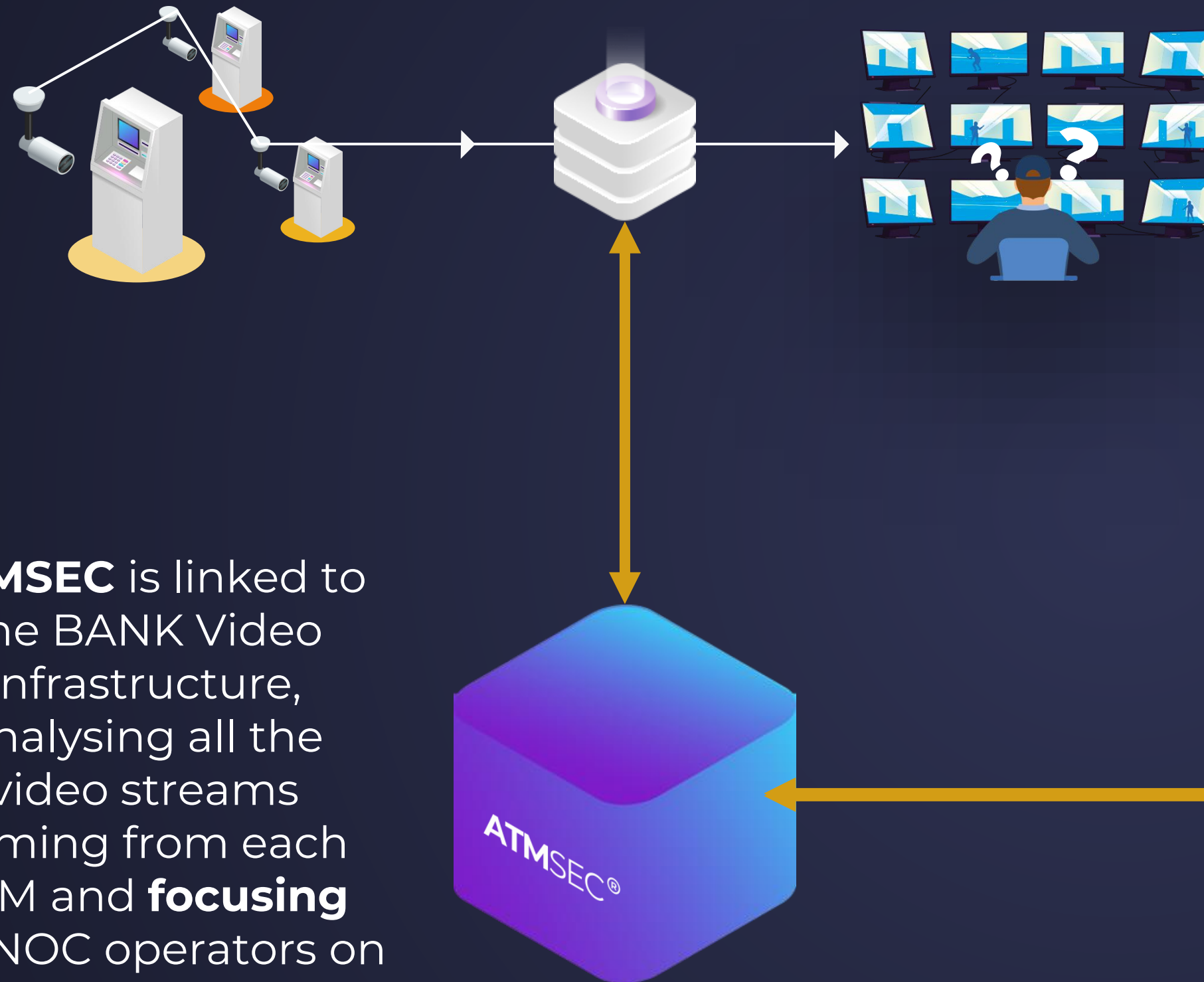
Many ATM's cameras are monitoring each single ATM

The Videos coming from the ATM are centrally collected

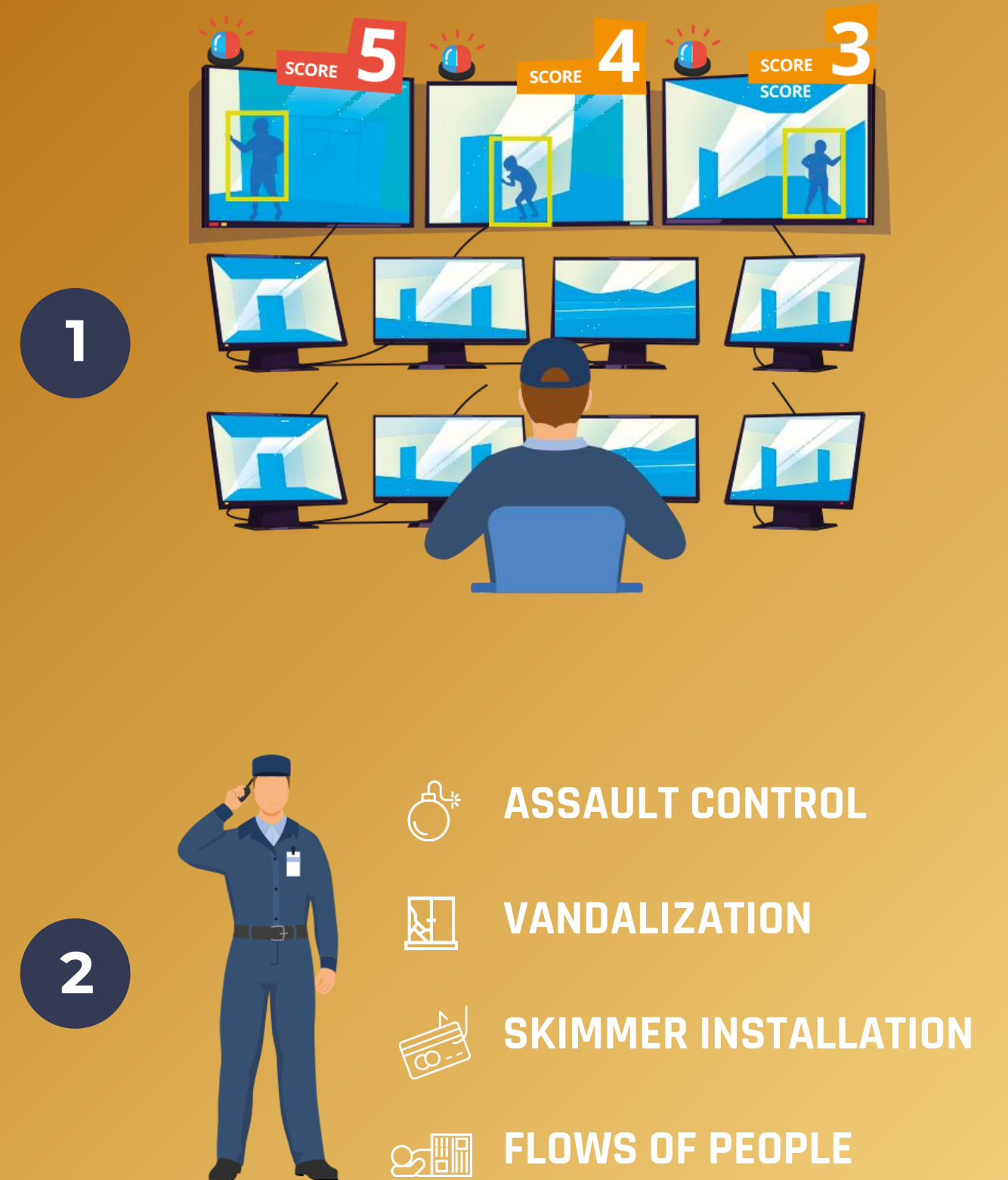
In the NOC, few humans has to monitor and check the whole situation

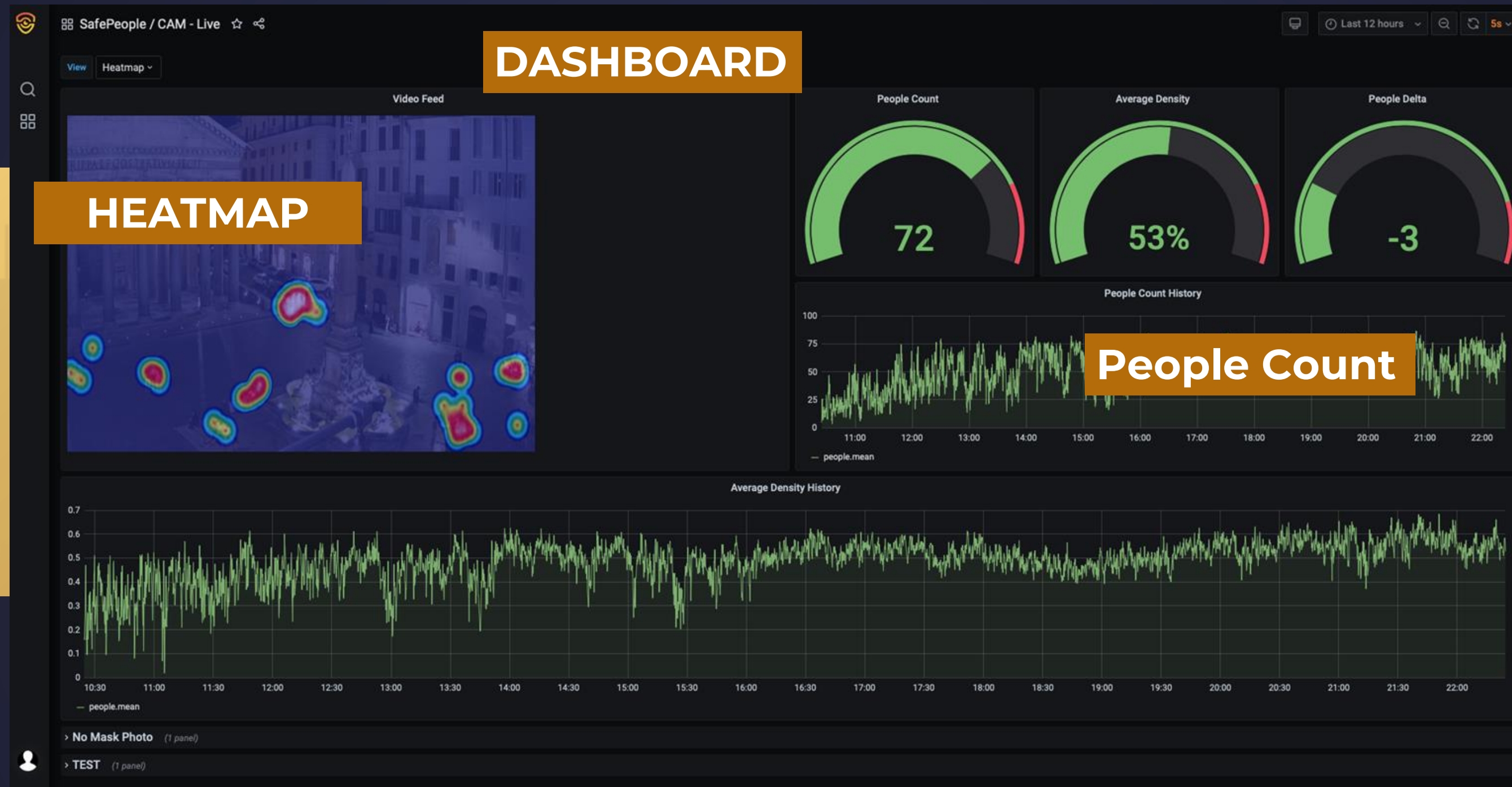
How ATMSEC changes the game?

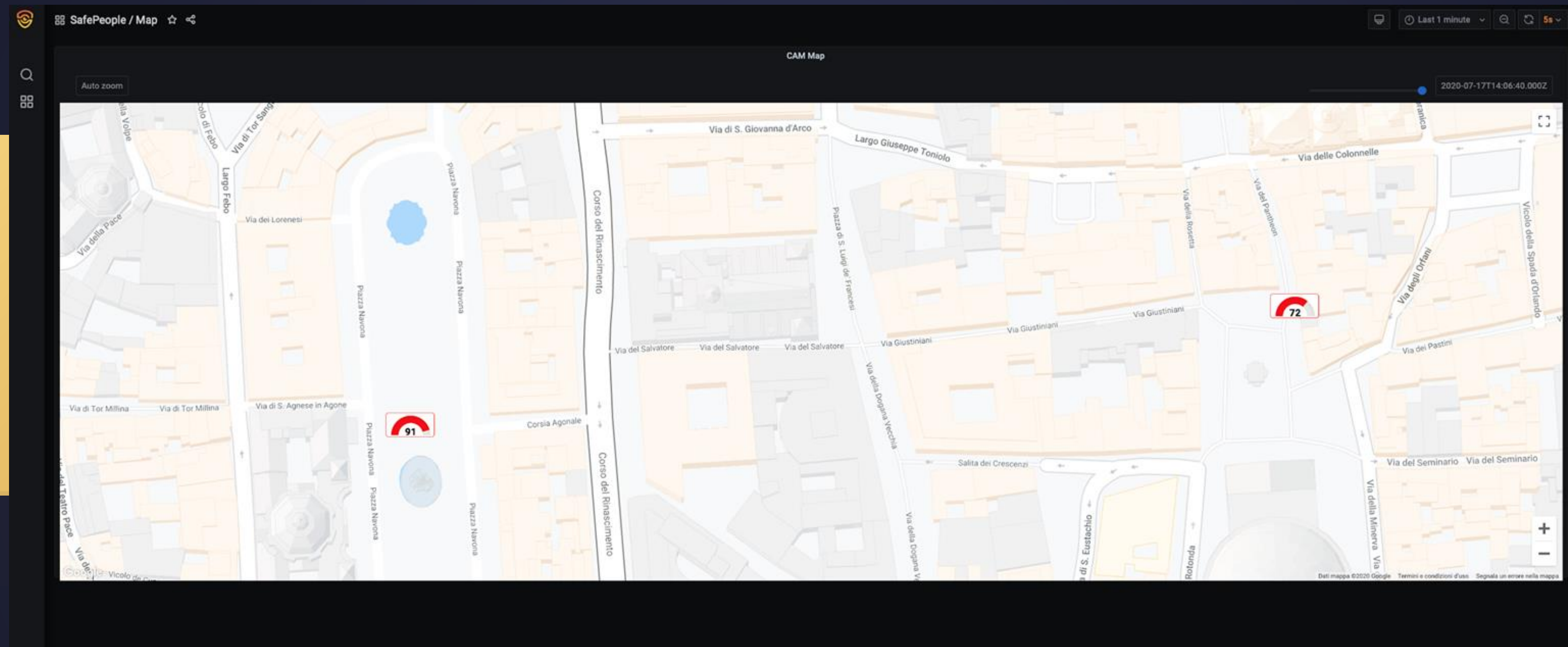
ATMSEC is linked to the BANK Video Infrastructure, analysing all the video streams coming from each ATM and **focusing** the NOC operators on anomalies, **triggering alarms** for them.



SCREEN PRIORITIZATION CATCH WHAT MATTERS







PRIVACY PROOF

GDPR OK



ATM-SEC does not store any image. It just records anonymous Counters.



Kinds of Alarms generated by **ATMSEC**

ASSAULT CONTROL

SKIMMER INSTALLATION



VANDALIZATION

FLOWS OF PEOPLE



1. Assault Control

2. Vandalization

3. Skimmer Installation



ATM ASSAULT DETECTION

ATM-SEC uses AI to detect and analyse abnormal behaviours.

In case a suspicious behaviour is detected, such as the use of explosives, an alarm is triggered.

On average, ATMSEC is able to trigger an alarm 3-4 minutes before an ATM is set to explode.

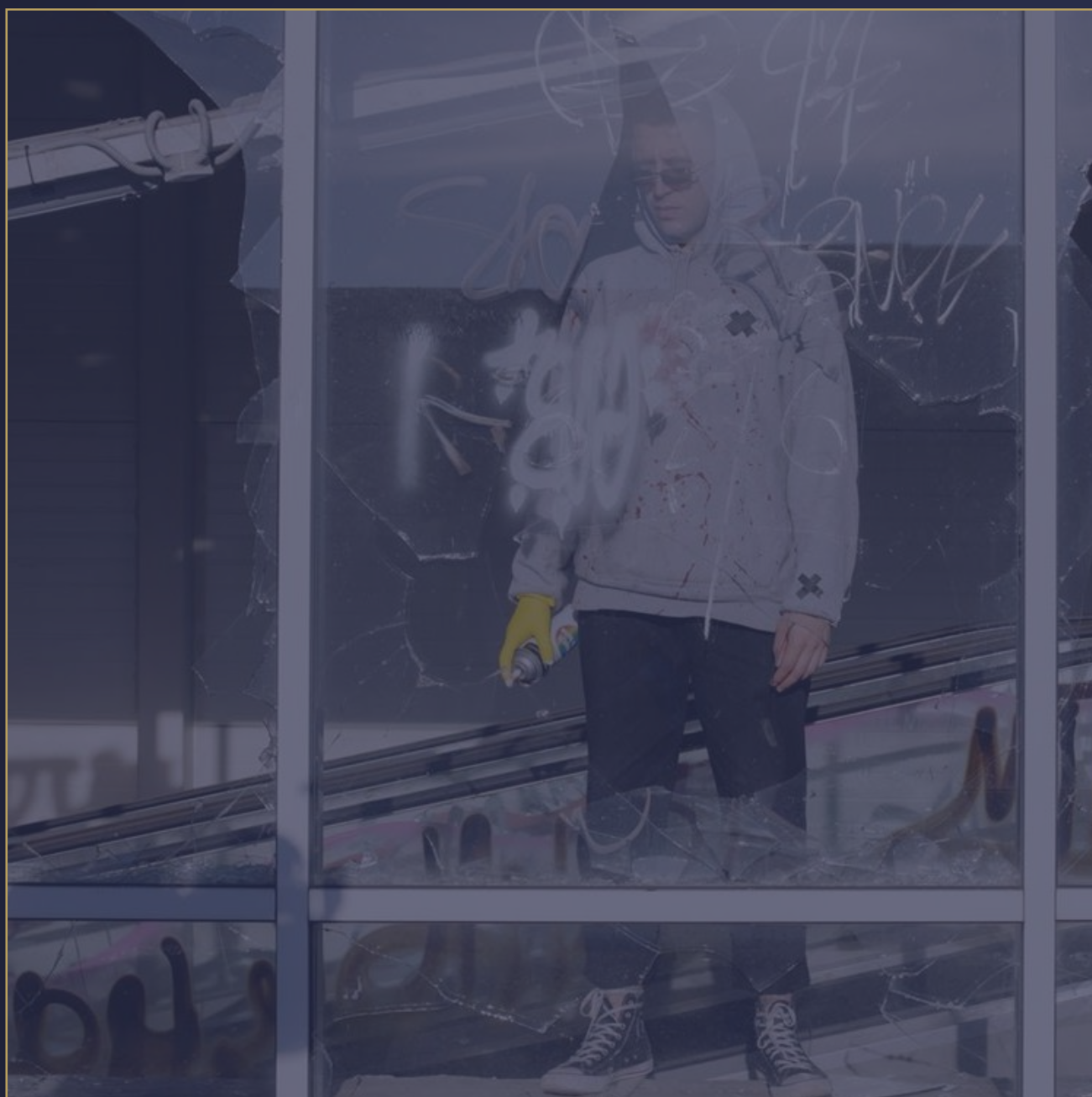


1. Assault Control



2. Vandalization

3. Skimmer Installation



VANDALIZATION DETECTION

AI models allow to process and recognize unusual behaviours such as kicking, hitting, spraying, etc., against ATMs and the surrounding environment.



2. Vandalization



3. Skimmer Installation

4. Flows of People



SKIMMER INSTALLATION DETECTION

ATMSEC detects and reports suspicious non-violent actions, such as the installation of skimmers in ATMs.



2. Acts of Vandalism

3. Skimmer Installation



4. Flows of People



TIME OF STAY

ATM-SEC can assess the duration of people's stops and passages (even the ones indoors), analysing whether a particular person is carrying out standard operations at the counter or whether they might be looking for a place where to sleep or to stay.



WHICH TECHNICAL SPECS SHOULD BE SUPPORTED BY THE CAMERAS TO ENABLE ATM-SEC FEATURES?

If a person can identify anomalies in the video, ATMSEC will also be able to.

COULD ATM-SEC BE INTEGRATED AND DOES IT WORK WITH EXTERNAL SYSTEMS?

Absolutely yes. At it's core, ATM-SEC is developed on standard systems (Grafana, SNMP notifications, APIs), ready for integration.

WHAT ARE THE INSTALLATION AND ALERTING AVAILABLE OPTIONS?

ATMSEC could operate centrally, attached to a centralized Bank's NVR. ATMSEC could also be installed directly on the EDGE, on the ATM side where a local system could monitor up to 4 video streams and generate alarms locally.

IF CONNECTED TO SUITABLE CAMERAS, ATMSEC WOULD ALSO BE ABLE TO ENABLE USE CASES SUCH AS: IDENTIFICATION OF THERMAL GRADIENTS, SMOKE AND FIRE, DISPERSED GASES AND CORROSION?

Sure. ATMSEC already supports thermal and Multi-Spettral images for video streams.

I HAVE A CUSTOM REQUEST. NOW WHAT?

Just ASK. ATM-SEC leverages on custom/specialized AI algorithms, we will gladly implement or develop new customized AI models as requested by our customers.

THANK YOU

DO YOU HAVE
ANY QUESTION ?

colum@asc27.com



JUST ASK.
WE ARE ALWAYS
AVAILABLE

PARTNER OF

